

Our financial values:

Mission before maintenance.

Sustainability.

Transparency creates trust.

**Generosity is a journey we
can all begin.**

**It's not about the total,
but the willingness to
sacrifice generously.**

Mark 12:43-44- Jesus called his disciples to him and said, "I assure you that this poor widow has put in more than everyone who's been putting money in the treasury. All of them are giving out of their spare change. But she from her hopeless poverty has given everything she had, even what she needed to live on."

You do not owe a church because it calls itself a “church”, but we ARE called by the gospel to support Jesus’ mission. We hope you’ll trust us to be the best way to contribute to that mission.

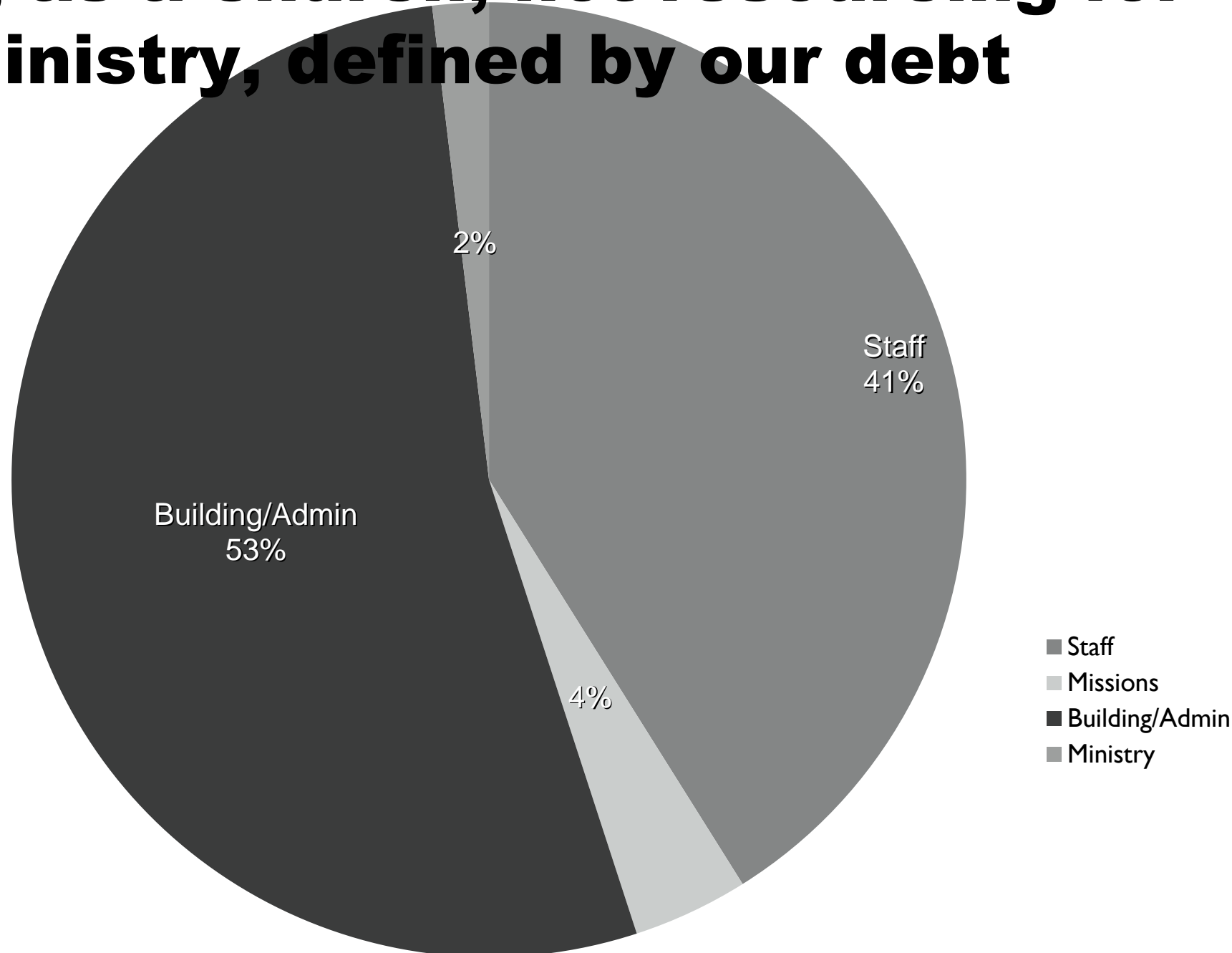
A mission-focused and sustainable church can...
**Nurture, welcome, and help children and students
learn how much God loves them and their neighbor**

A mission-focused and sustainable church can...
**Support you in times of stress and difficulty for
your family and loved ones**

A mission-focused and sustainable church can...
**Create opportunities for you to make a difference in
the world in a holistic way in your community and
around the world.**

A mission-focused and sustainable church can...
Welcome and celebrate people that other faith communities in our community do not- people who have given up on church or who feel church has given up on them.

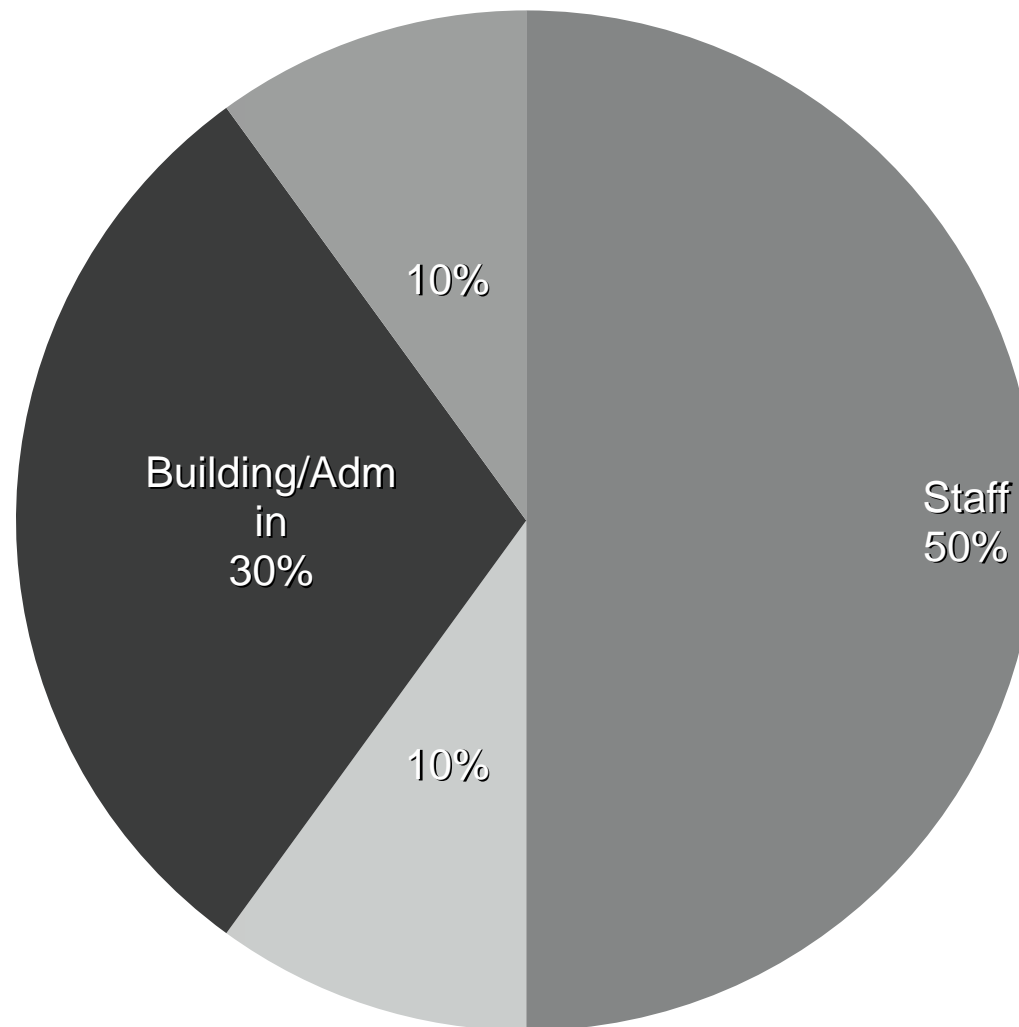
Where we were...
2011 New Beginnings Report-
Understaffed, unsustainable, not
tithing as a church, not resourcing for
ministry, defined by our debt



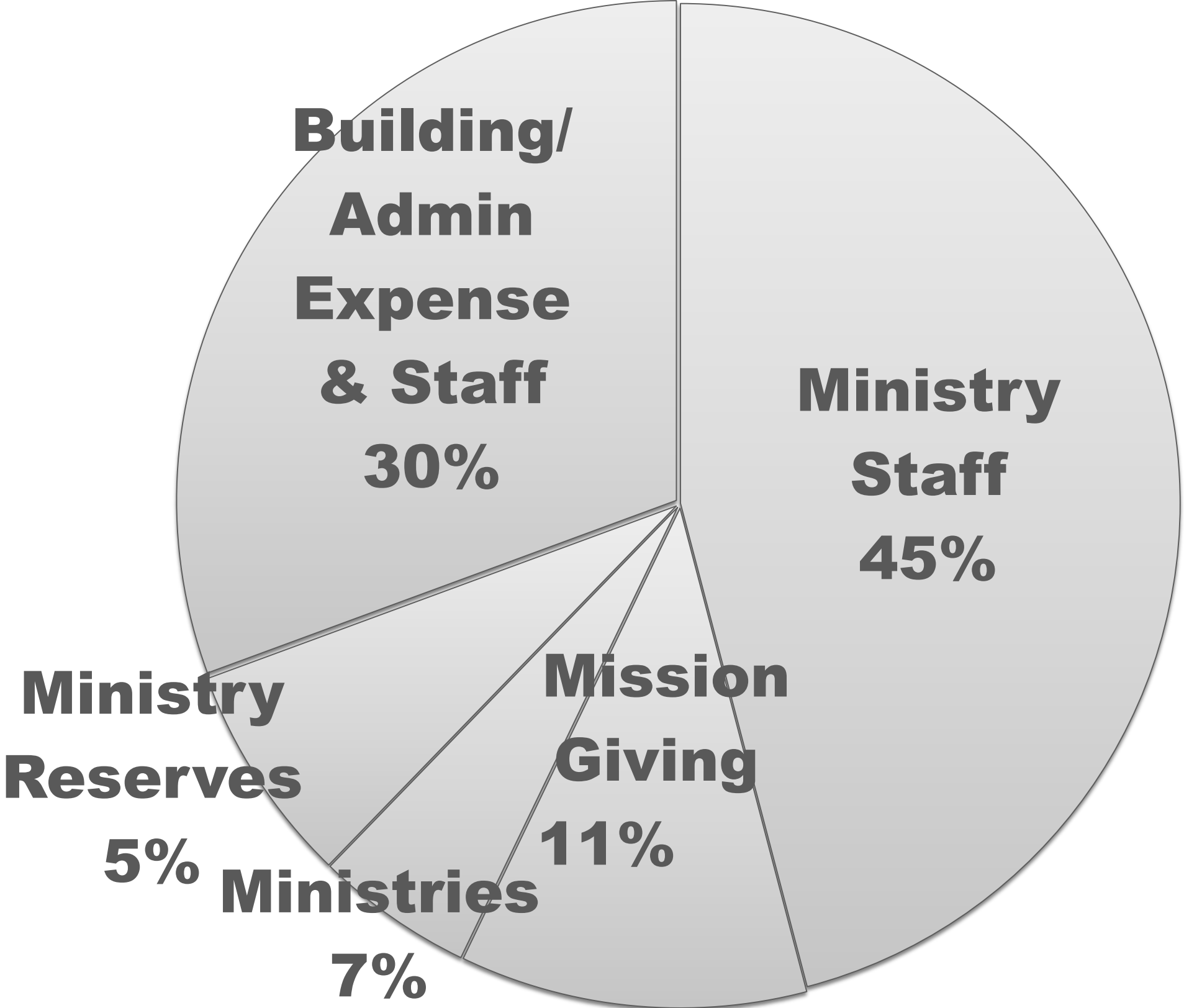
Our budget targets...

A model for generous
& sustainable ministry

(staying within 5% of each target
while always tithing to mission.)



2018 Tangible Ministry Spending: 70%



Ministry Staff \$158,500

Ministry Budgets \$24,600

Ministry Reserves \$20,000

Mission Tithe \$40,000

AdminStaff/Building \$82,000

TOTAL BUDGET: \$350,510

The key to our church being a sustainable and missional church lies with our willingness to make our homes sustainable and missional.

first
Personal Plan for Commitment
(based upon weekly giving)

<i>annual income</i>	lower range giving			middle range giving			upper range giving			tithe	beyond a tithe	
	1%	2%	3%	4%	5%	6%	7%	8%	9%	10%	12%	15%
\$15,000	3	6	9	12	14	17	20	23	26	29	35	43
\$20,000	4	8	12	15	19	23	27	31	35	38	46	58
\$40,000	8	15	23	31	38	46	54	62	69	77	92	115
\$60,000	12	23	35	46	58	69	81	92	104	115	138	173
\$80,000	15	31	46	62	77	92	108	123	138	154	185	231
\$100,000	19	38	58	77	96	115	135	154	173	192	231	288
\$125,000	24	48	72	96	120	144	168	192	216	240	288	361
\$150,000	20	58	87	115	144	173	202	231	260	288	346	433

What now?

Pray for 24 hours. Your packet will arrive in the mail or you may pick up one up.

Take your next step in generosity.

Pledge online or by form.

Pledging allows us to share more and research suggests you are more likely to follow through with a pledge.